

TOPAZ REMASK 2

Getting Started

Here is your Topaz ReMask 2 interface and easy to use tools.



2. Preview Navigator

Displays the region of the preview image currently being focused on.

3. Tools

Displays all of the tools that you will need to successfully create your mask.

1. Preview & Views

Displays the preview of the image. Your View tabs offer multiple ways to view your image in the Preview area while making your tri-map and refining selections.

4. Menu

Enables user settings and contains other options.

Zoom - Allow you to zoom in and out of specific areas of your image to allow for more precise selections.

General - The general tools include: undo, redo, selection and the hand tool.

Brushes - Allow you to select the elements in the image that you want to keep, remove and computer.

Topaz Magic Brush - Transforms red & blue brushes into refinement tools.

Fills - Allow you to fill all of your image or just a portion of your image with the selected color.

Reset - Allow you to reset your entire image to the selected color. Using this feature will erase any previous selections made.

Compute - Analyzes the tri-map selections and creates mask.

Mask Hardness - Allows you to adjust how hard the mask is applied.

Your tri-map is the key to creating your mask. The color selections (tri-map) and the refinement selections that you make provides ReMask 2 with a starting and an ending point.

A tri-map is made up of 3 colors: Red (cut), Green (keep) and blue (analyzed by ReMask 2). The purpose of your tri-map is to sample the colors in your image.

Wherever you paint red, ReMask looks at it and determines that those colors are meant to be removed. Wherever you paint blue, ReMask will take the color samples gathered in the red and green areas to figure out what the blue areas should be.

1. Red Area

The red area represents the part of the image that you want to cut.

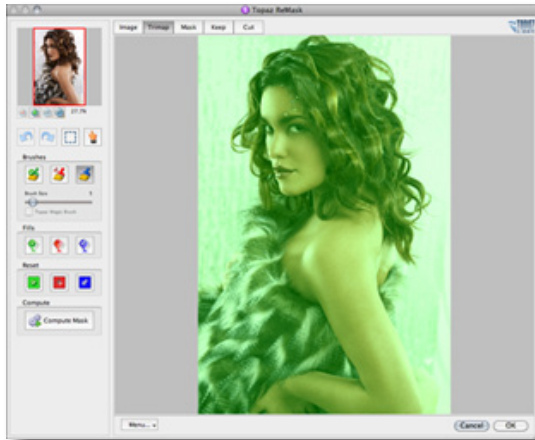
2. Blue Area

The blue painted area represents the part of the image that you want to process. When you process your image, Topaz ReMask 2 will analyze this area to help extract the unwanted background from the desired image subject.

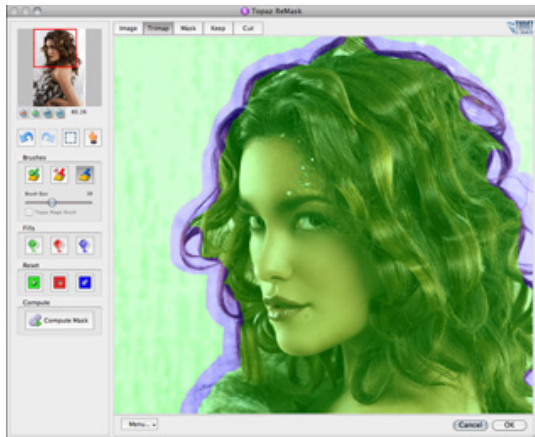
3. Green Area

The green area represents the part of the image that you want to keep.





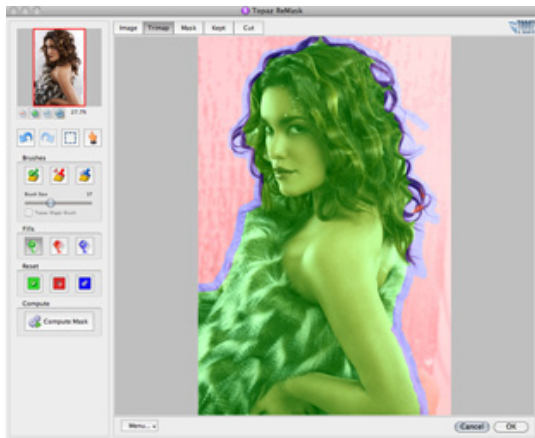
1. Start by unlocking your background layer and then create a duplicate layer. Then go to Filter -> Topaz Labs -> ReMask 2. When ReMask 2 loads it will automatically open to the Tri-map view and your image will be filled with green.



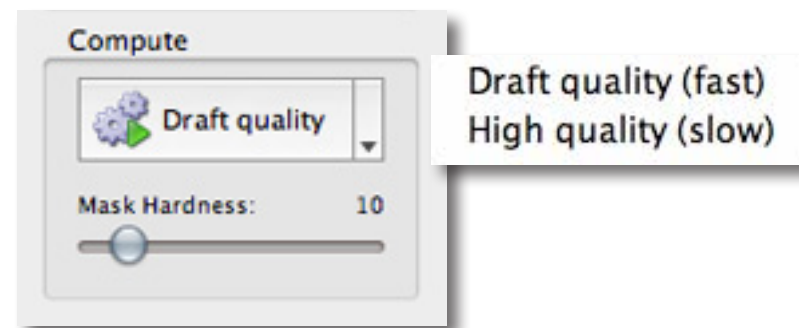
2. Select the Blue Brush tool and then use the brush size slider to select your desired brush size. Then begin to outline the edges of the object that you would like to mask.

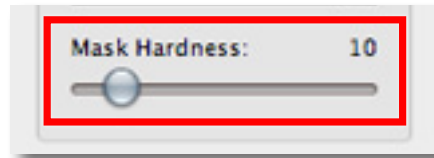
3. Select the Red Flood Fill tool and fill the outside of your blue selection with red.

Your tri-map is now complete. You can view the Keep, Cut and Mask views before you process your image, if desired.



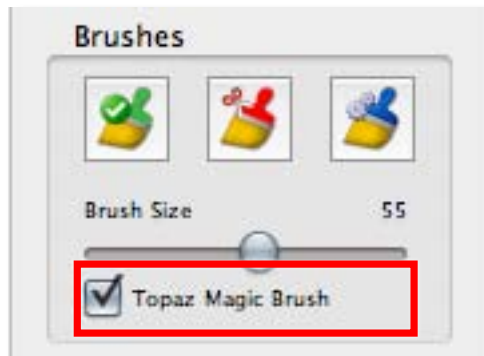
4. Click on the draft quality button process your image. Select your processing speed / quality (if you are using a large image).



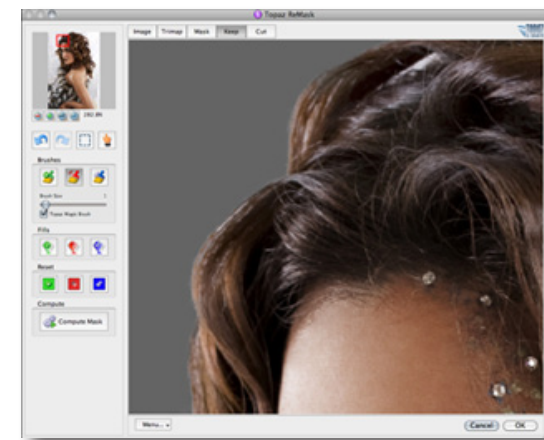
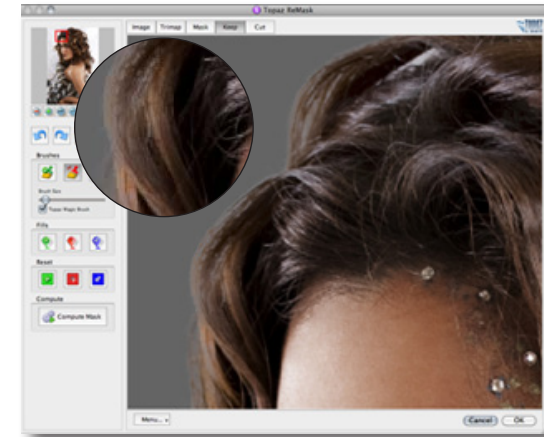


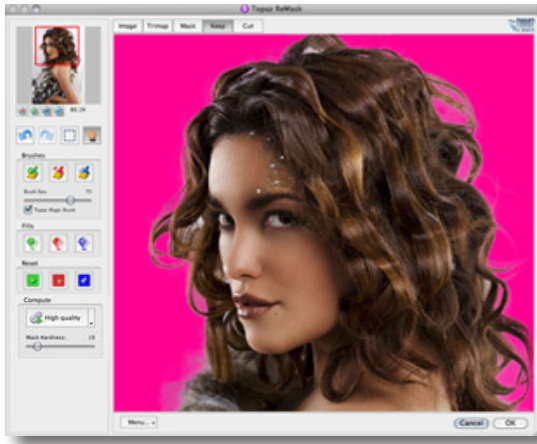
5. After you process your image you can use the Mask Hardness slider to adjust how hard your mask is applied to your image edges.

6. After your mask has been made you will notice that the Topaz Magic Brush is now available under your brushes menu. Use the Topaz Magic Brush tool to refine your image by bringing back lost detail or eliminating excess detail or color contamination in your image.



Select the red brush (remove detail) or the green brush (restore detail) and then select a small brush size and then make short strokes down the refinement area. Each time you make a stroke your image will automatically update reflecting the change.

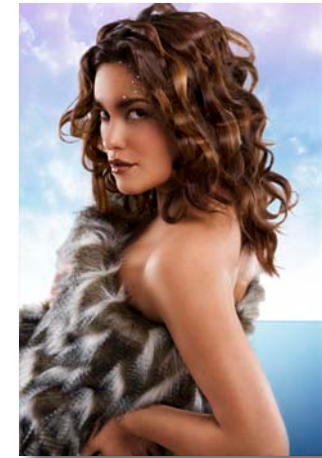
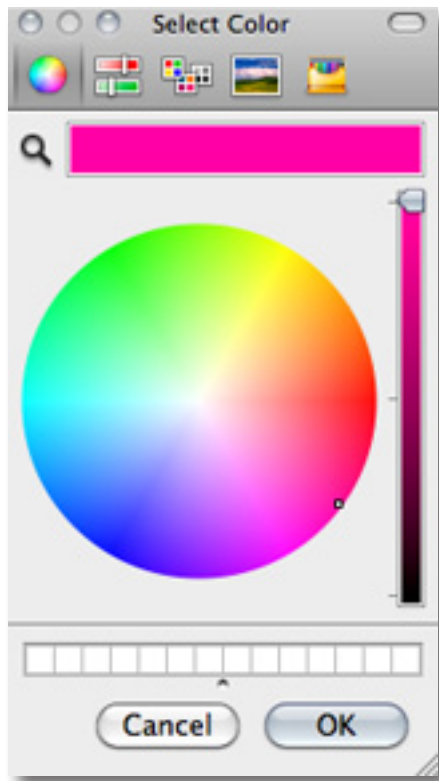




7. You can also change the background color in your mask to increase visibility of fine details while refining your mask.

To change your background color go to Menu and select the Set Background Color option.

8. Once you are happy with your selections click OK to process and save your masked image back to Photoshop.



These simple, yet powerful tools make it easy to mask out the unwanted background while retaining intricate image details and overall image quality.