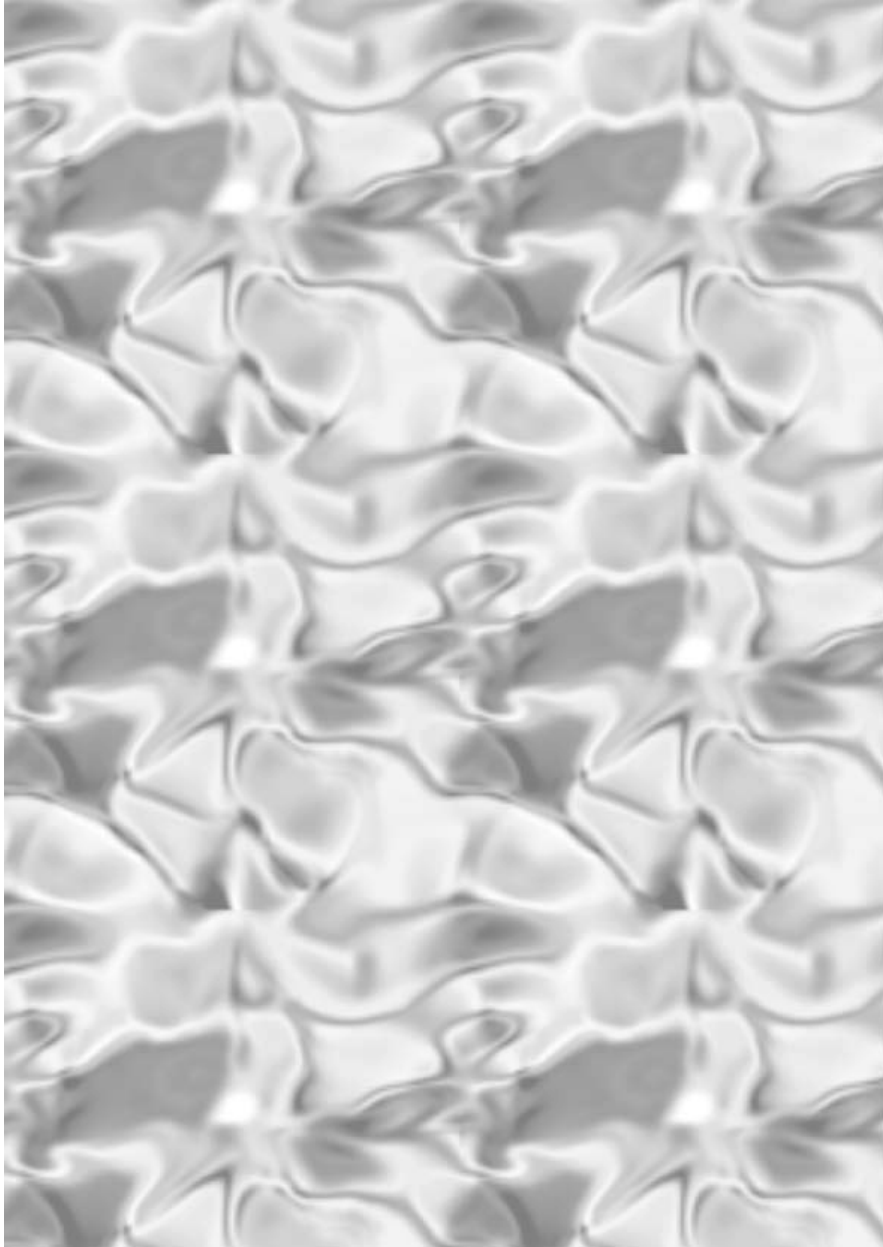
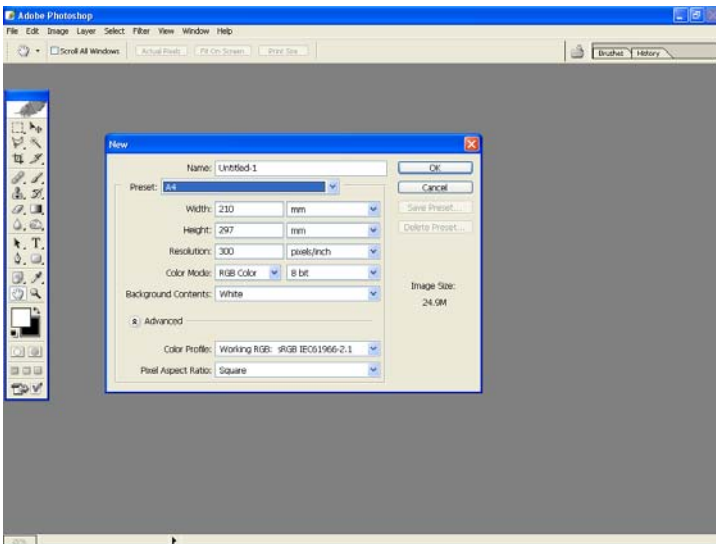


*If you wish for a copy of these instructions please email me at [bcpc@genica.com.au](mailto:bcpc@genica.com.au)- Jen*

## To create a satin backdrop in Photoshop

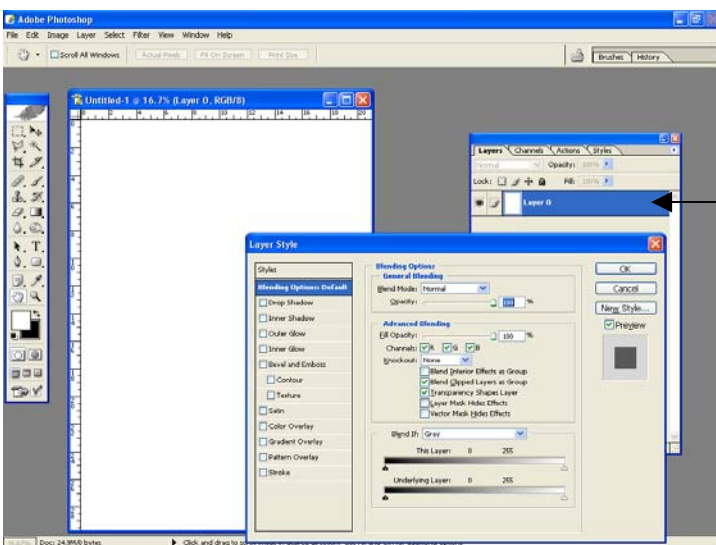
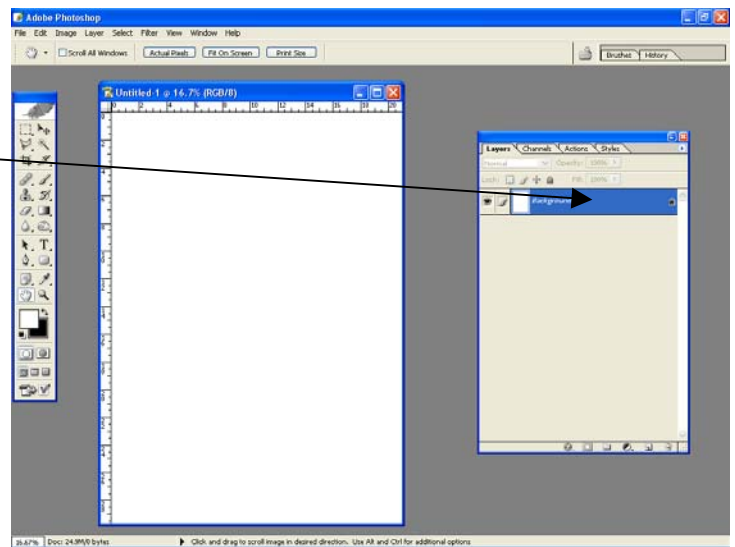
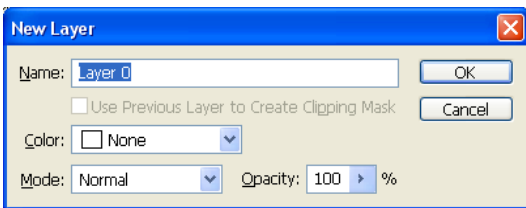




Open a new document set to A4 size and use these settings

Double Click on the background layer to make it into a normal layer

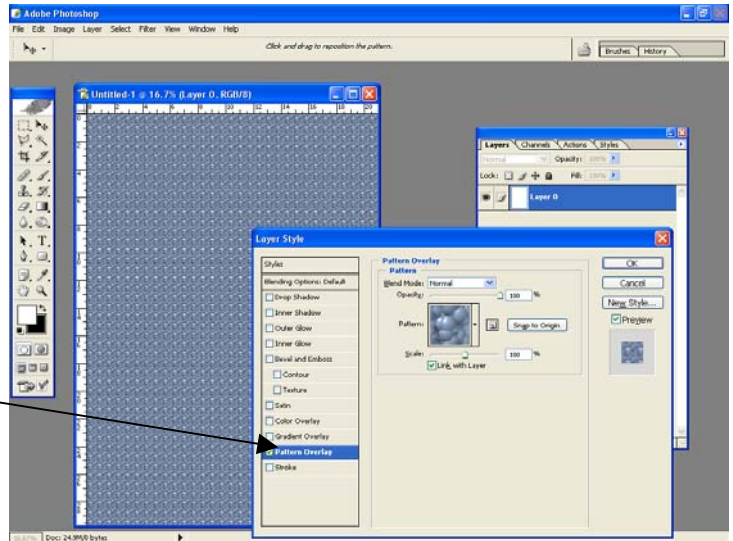
Press Ok when this screen appears



Double click on the layer again to bring up the Layer Style.

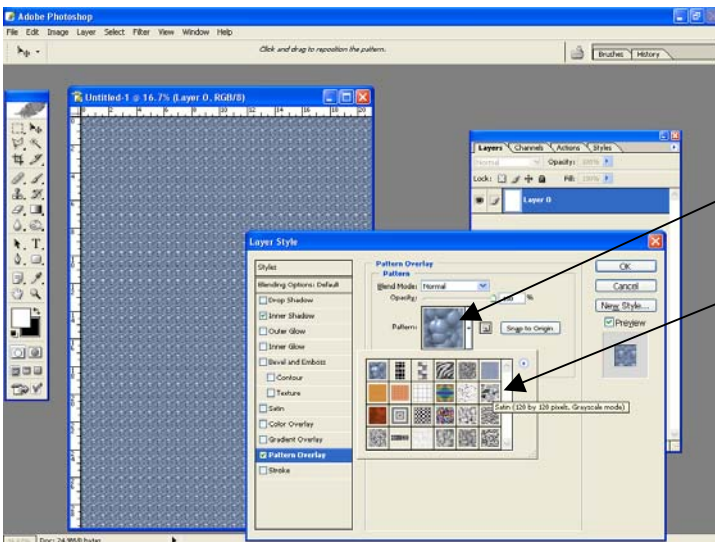
This is the default that we will change

Click on Pattern overlay



Click on Pattern

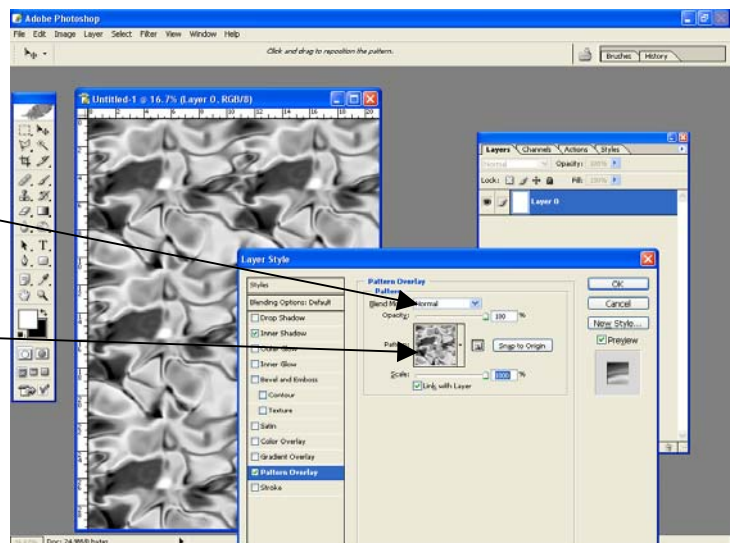
To bring in the pattern chooser and choose satin

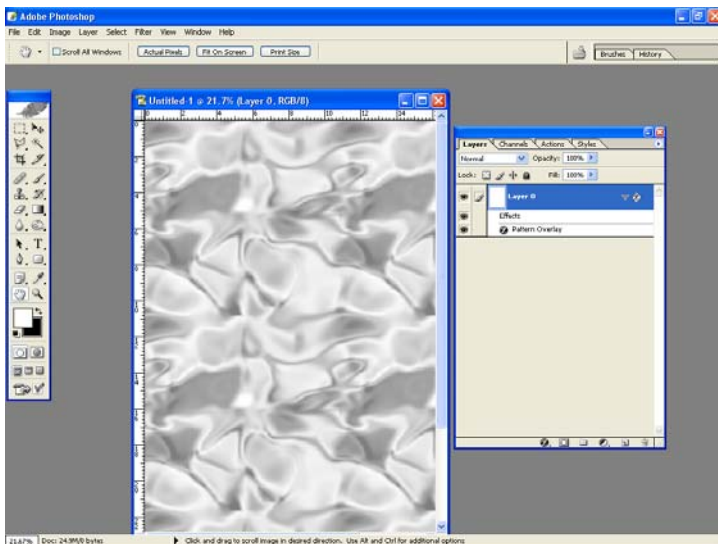


Change the opacity to 50%

Change the scale to 1000%

Press OK





It is now complete so

Go to Layer | Flatten image

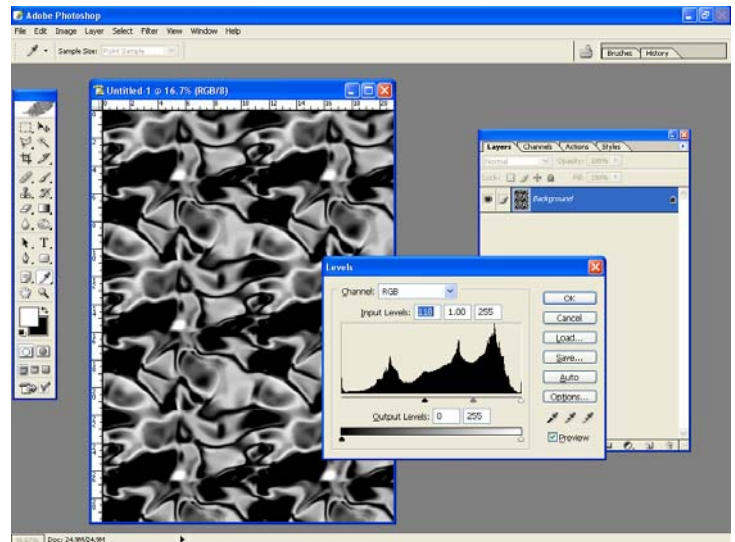
And you can now use it as a background

## To create Black satin

Follow all the previous steps, but leave the opacity of the pattern overlay at 100%.

After you have flattened it

Using levels you can darken it to make it look like black satin. ( you will need to do a little healing in places)



## To create coloured satin

Follow all the previous steps, but leave the opacity of the pattern overlay at 100%.

After you have flattened it

Create a new empty layer and fill it with the colour of your choice and then reduce the opacity of the coloured layer to about 50%